

Satellite Forms Server Tutorial -

Deploying the an Application Using Satellite Forms Server

Assumptions:

- Software:
 - Satellite Forms Enterprise Edition 4.1.3
 - Satellite Forms Server 1.1
 - Access 2000
- The sfstutorial.zip file has been unzipped to **c:\sfstutorial** (or another directory you will remember)

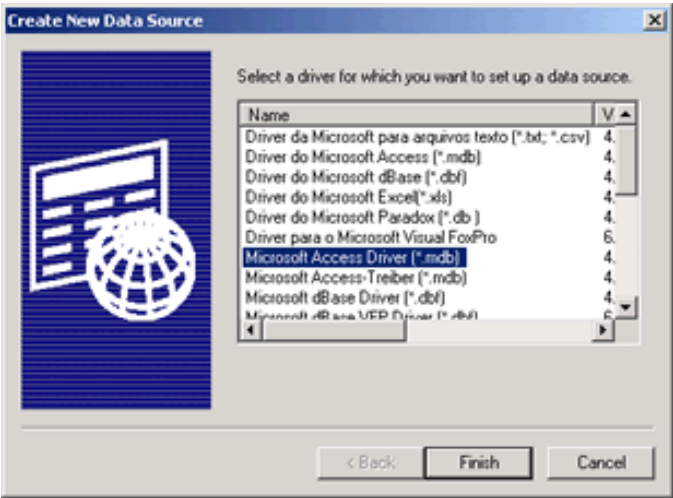
Steps:

- [Create a System DSN](#)
- [Import the Application Tables](#)
- [Link the Table to the Application Controls](#)
- [Set the Application Version](#)
- [Install the Application to the Server](#)
- [Create a Group and a User on the Server](#)
- [Register the Application with a Group](#)
- [Install and Configure the Mobile Client](#)
- [Test the Sync](#)

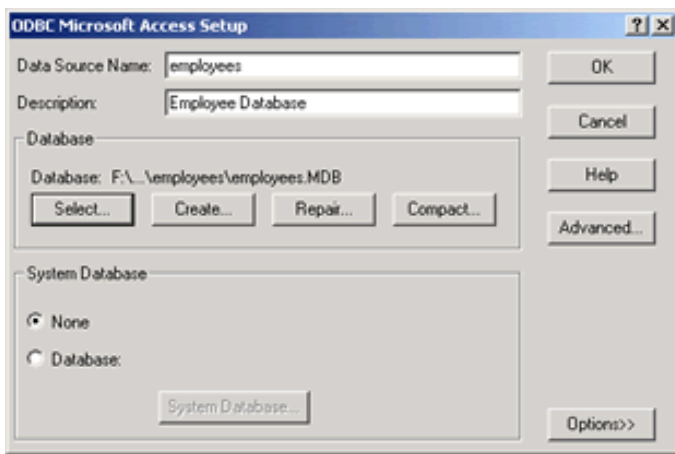
Create a System DSN



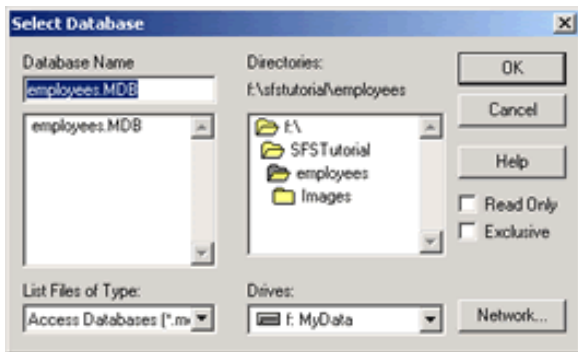
- Go to Start → Settings → Control Panel → Administrative Tools → Data Sources (ODBC), select the **System DSN** tab and then select the Add button.



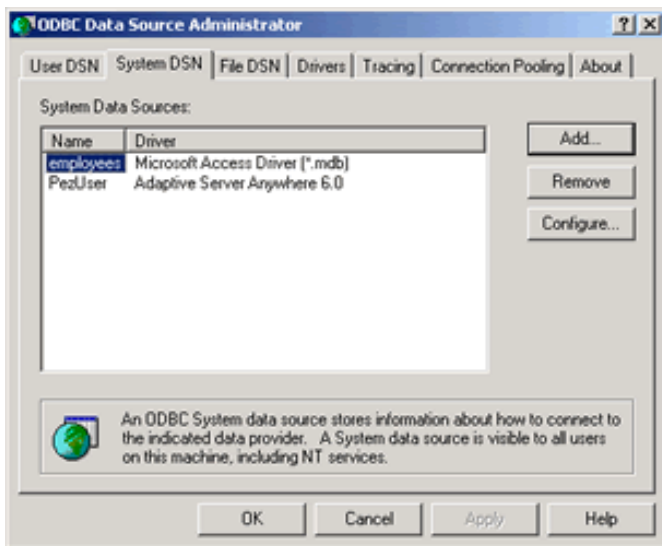
- Select the **Microsoft Access Driver (*.mdb)** and click the Finish button.
- Provide a name for the **Data Source Name** value (i.e. employees). A description is optional.



- Click the **Select** button to browse for the database you wish to link to. Navigate to the **employees.mdb** file that you downloaded with this tutorial. Select the file and then click the **OK** button.



- You will now have the data source listed in your **System DSN** tab of the ODBC Data Source Administrator screen.



Import the Application Tables

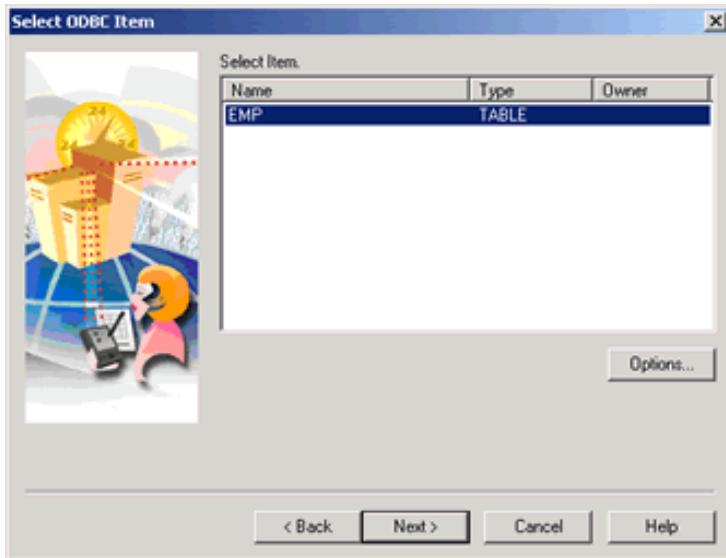


- Open the **emp.sfa** Satellite Forms application.
- Click on the **Tables** tab of the navigation pane in Satellite Forms and you will notice there are no tables for this application.
- Right-click on **Tables** and select the **Import Table...** option.
- Verify the **ODBC Plug-in** is selected and then click the Next button.

- Select the Data Source name you just created (employees) and click the Next button.

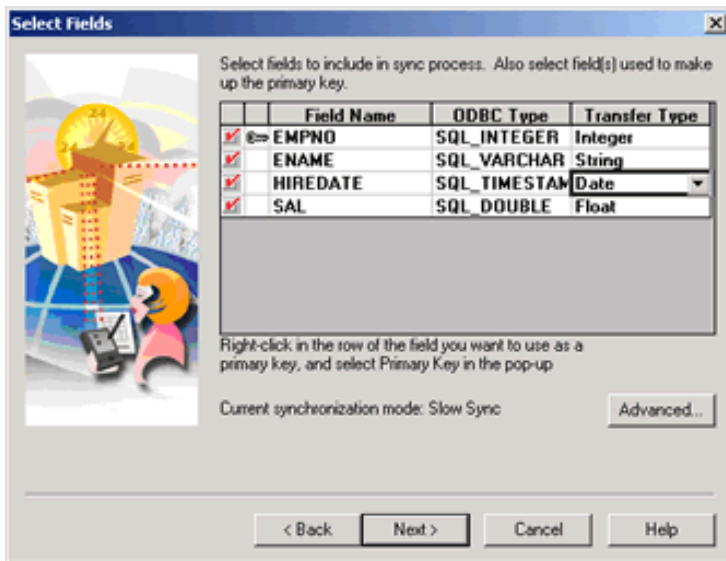
●

Select the EMP table and click next.

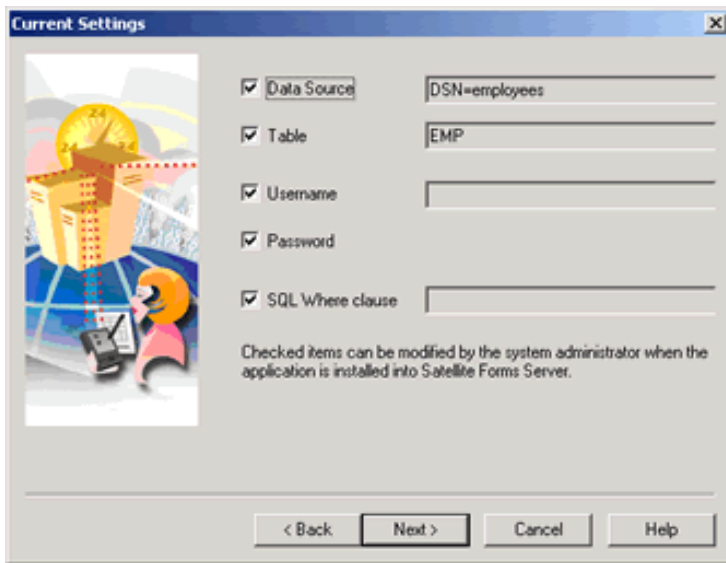


- Check off the columns to link and right-click to identify the EMPNO field as the primary key column.

IMPORTANT: Select DATE as the Transfer Type for the HIREDATE field, then click Next.



- Verify the settings for your connection and click the **Next** button.



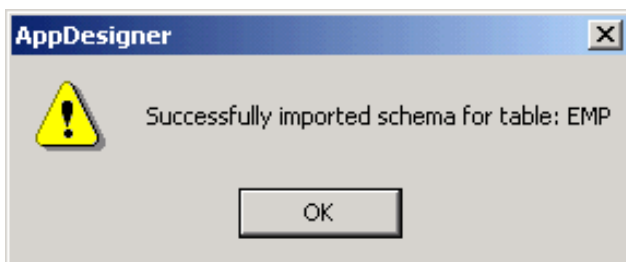
Current Settings

☒ Data Source: DSN=employees
☒ Table: EMP
☒ Username:
☒ Password:
☒ SQL Where clause:

Checked items can be modified by the system administrator when the application is installed into Satellite Forms Server.

< Back Next > Cancel Help

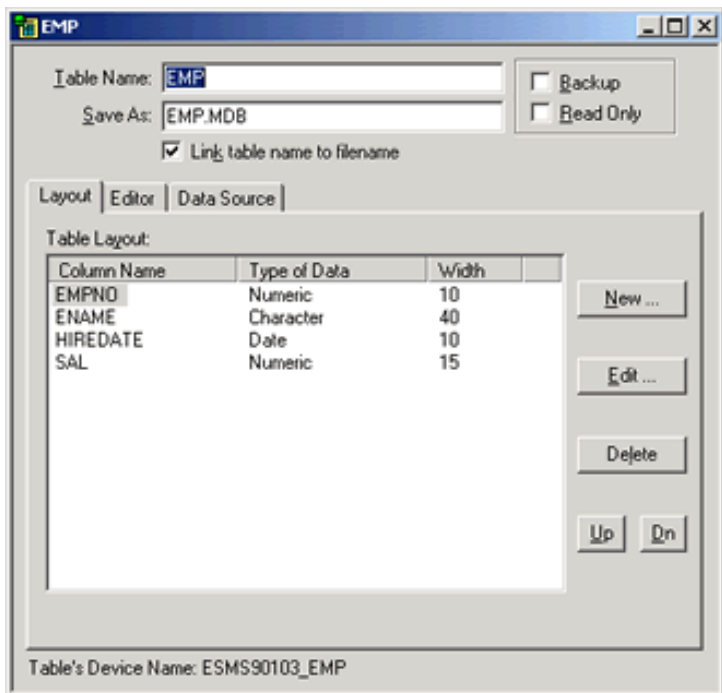
- Click **Finish** and the table is now linked to a table in the Access database.



AppDesigner

Successfully imported schema for table: EMP

OK



EMP

Table Name: EMP ☐ Backup
 Save As: EMP.MDB ☐ Read Only
☒ Link table name to filename

Layout Editor Data Source

Table Layout:

Column Name	Type of Data	Width
EMPNO	Numeric	10
ENAME	Character	40
HIREDATE	Date	10
SAL	Numeric	15

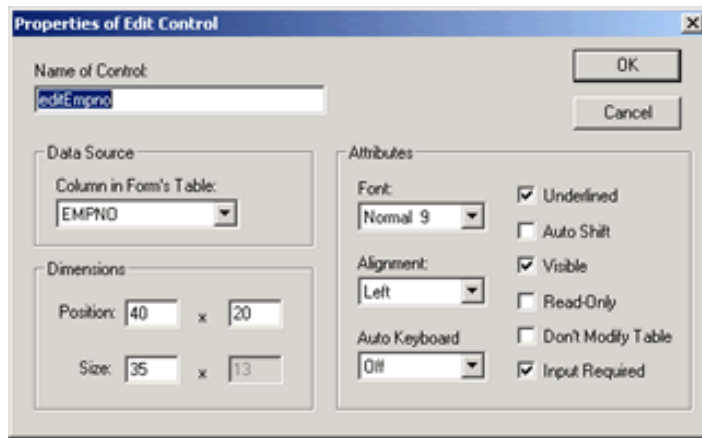
New ...
Edit ...
Delete
Up Down

Table's Device Name: ESMS90103_EMP

Link the Table to the Application Controls



- Select the **UI** tab in the Satellite Forms navigation pane.
- Right-click on the **Edit** form and select **Properties...**
- Select **EMP** from the **Linked Table** droplist and click the **OK** button.
- Open the form and link the controls to corresponding columns in the EMP table.
 - Double-click on a control to view its **Properties** dialog.
 - Select the appropriate **Column in Form's Table** from the droplist.

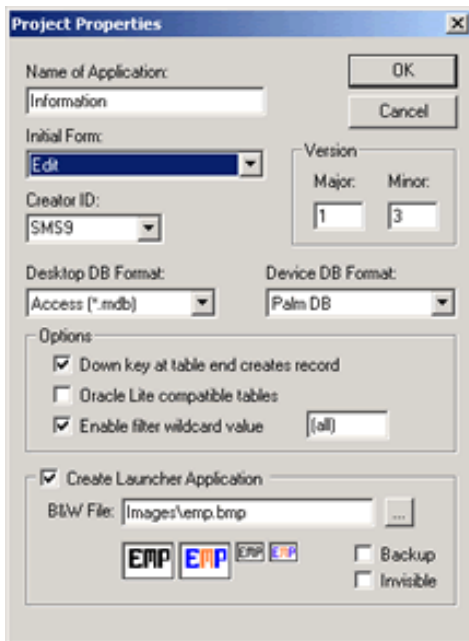


- Repeat for all **four** edit controls.

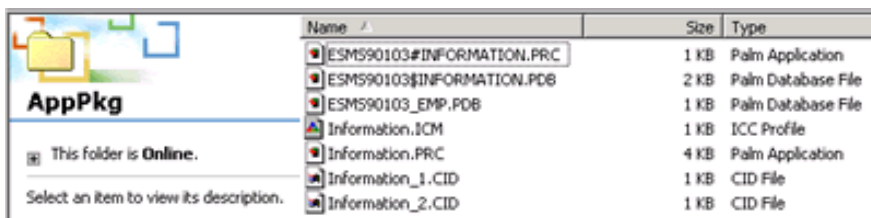
Set the Application Version Number



- Select **Project Properties...** from the **Edit** menu.
- Set the **Major** and **Minor** version numbers of the application.
- Check the **Create Launcher Application** box and select the **emp.bmp** from the images directory.
- Click the OK button to save these changes.



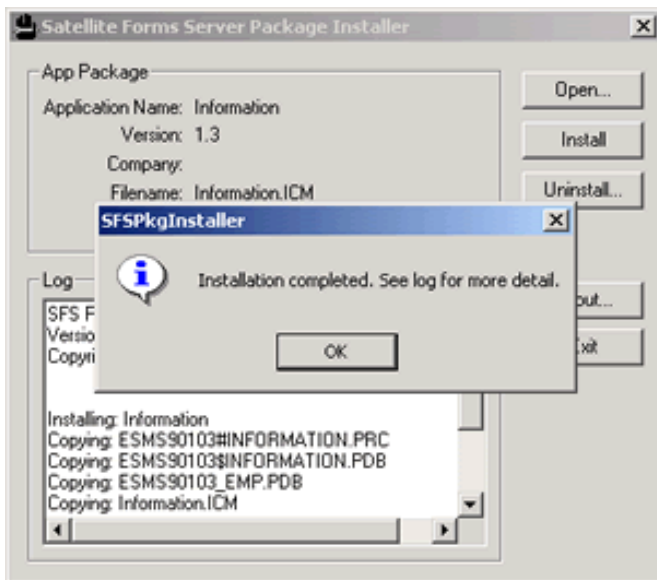
- Save the project.
- Select **Rebuild All** from the **Build** menu (or press the F7 key)
- Close **Satellite Forms**
- This will create an AppPkg directory in the location where the application is stored. The following list of files will be created:



Install the Application on the Server



- Launch the **Package Installer** application by navigating to Start → Programs → Satellite Forms Server → Package Installer
- Click on the **Open** button and navigate to the **AppPkg** directory for your application.
- Select the **Information.ICM** file and click the Open button.
- Click the **Install** button to install the application.
- You will receive a **confirmation** that the application was installed successfully. The **log** will show you the list of files that were installed to the server.



- Click the **OK** and then the **Exit** button to quit the Package Installer application.

Create a Group and a User on the Server



- Launch the Web Admin by navigating to Start → Programs → Satellite Forms Server → Satellite Forms Server Web Admin
- Login using the default username and password combination
 - username: Admin
 - password: Admin
- Select the **Groups** link in the left navigation pane and click the **Add New Group** button in the right pane.
- Provide a **name** for the group and an optional **description** and note if you choose to do so and click the **Add Group** button.
- You will receive a **success** notification on the screen. Now add a user that will be a member of that group.
- Select the **Users** link in the left navigation pane and click the **Add New User** button in the right pane.
- Provide a **username** for the user and a **password** that is at least 6 characters long.

- Select the **group** for the user. The rest of the information is optional.
- Click the **Add User** button. You will receive a success notification on the screen.

Register the Application With a Group



- In order for the users of the system to receive applications from the server you must add application to the group the user belongs to.
- Select the **Groups** link in the left navigation pane and then select the link for the group you created above.
- You should see your user listed in the User in Group section.
- Click the **Add** button next to the Applications in Group section to add a new application. You will be provided a list of applications that are currently installed on the system.
- Choose the Information(x.x) and then click the Add button. (x.x will be the version number you provided earlier)

Applications To Add To Group

Information(1.3)	Add
	Return to Group

- You will be asked to confirm that you want to add the application. Select the OK button to continue.
- You will be prompted to verify the database connection information for your application. Verify the DSN matches the DSN you created earlier.

Customizable settings for Information(1.3)

Custom settings for step 1

Table:

Datasource:

User ID:

Password:

SQL Where Clause:

- Click the OK button to finish registering the application with your group.
- Confirm the settings for your group resemble the image provided below.

Group:

Description:

Notes:

Users In Group

Applications In Group

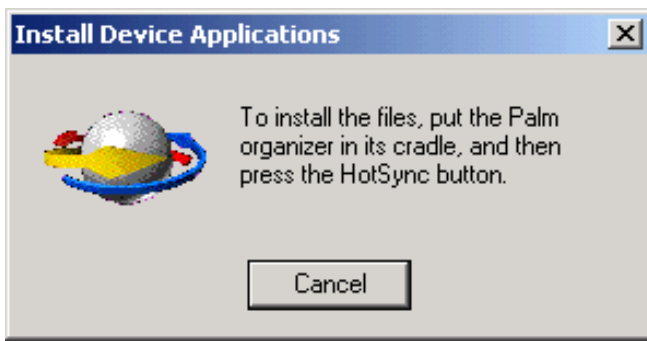
Install and Configure the Mobile Client



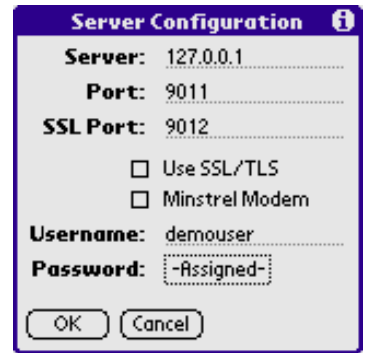
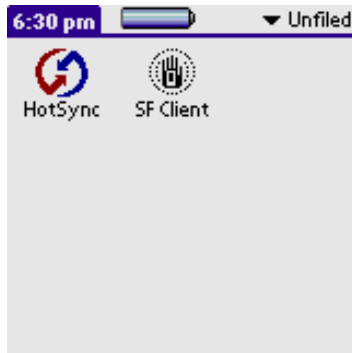
- You are almost ready to test the synchronization of the application with a handheld. We will test using a device and a local HotSync. (You could also test using a wireless connection to the server or the PalmOS Emulator)
- In order to HotSync with the Satellite Forms Server, you need to install the **Satellite Forms Server Desktop**. The installer can be found in the Desktop Installation subdirectory of the Satellite Forms Server installation directory (most commonly found in C:\Program Files\Satellite Forms Server\Desktop Installation). This directory is shared by default after installing the server.
- You can either install the desktop on the server machine or another machine on your network.
- Launch the **setup.exe** to install the desktop conduits for Satellite Forms Server. Follow the prompts to complete the installation.
- Install the **Satellite Forms Runtime Engine**
 - Locate the SF41RDK.prc file included with sample application.
 - Double-click the file and you will be prompted to install the file to a user.
 - Select your Palm Username from the list.
 - HotSync your device.
- An icon called **Install SFServer's Mobile Client** was placed on your desktop.



- Double-click this icon to launch the mobile client setup. You will be prompted by the following message:



- Place your device in the cradle and press the **HotSync** button. This will install the mobile client on the device.
- After the sync has completed, launch the **SF Client** application on the device.



- If you leave the username or password blank, you will be prompted to enter them each time you sync.
- **HotSync** the device in the cradle to sync with Satellite Forms server.
- Tapping the **Sync Now** button is used if you are synchronizing over the air using a wireless TCP/IP connection.
- You should now have the **Information** sample on your device.

Test the Sync



- Launch the application on your device.
- Make some changes in the data.
- HotSync the device to the server.
- Verify your changes in Access.
- Make changes in Access.
- HotSync the device.
- Verify the changes on the device.