



**FOR EDUCATIONAL USE ONLY.  
NOT INTENDED FOR BUILDING.**

**288 SQUARE FEET + SLEEPING LOFT**

**STUDY  
PLANS**

**THE MARIE COLVIN**



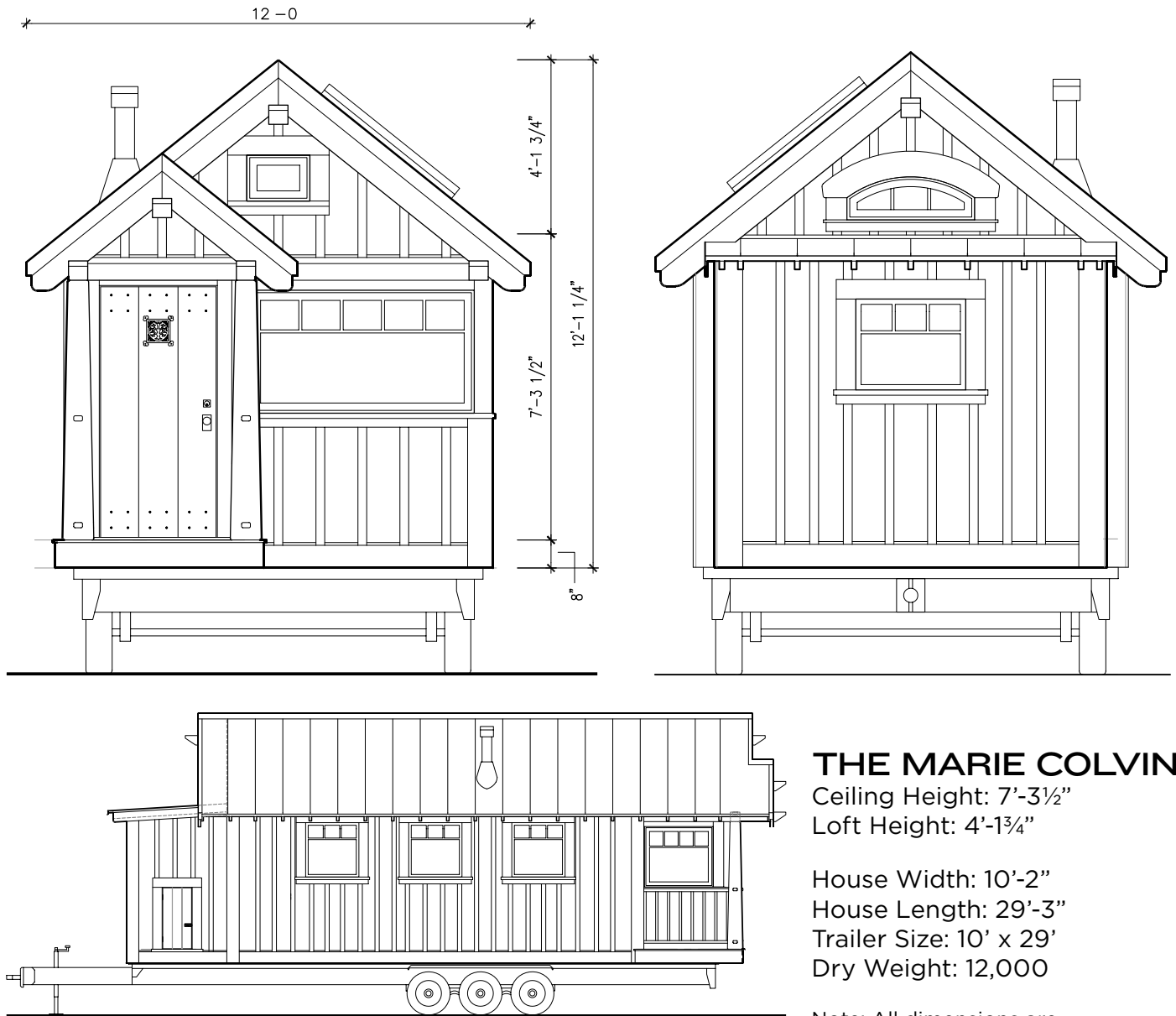
**FOUR LIGHTS TINY HOUSE COMPANY | [www.fourlightshouses.com](http://www.fourlightshouses.com)**

# THE MARIE COLVIN

288 Square feet + Sleeping Loft

Estimated Material Costs (foundation) : \$25,600

Estimated Material Costs (on trailer) : \$30,400



## THE MARIE COLVIN

Ceiling Height: 7'-3 1/2"

Loft Height: 4'-1 3/4"

House Width: 10'-2"

House Length: 29'-3"

Trailer Size: 10' x 29'

Dry Weight: 12,000

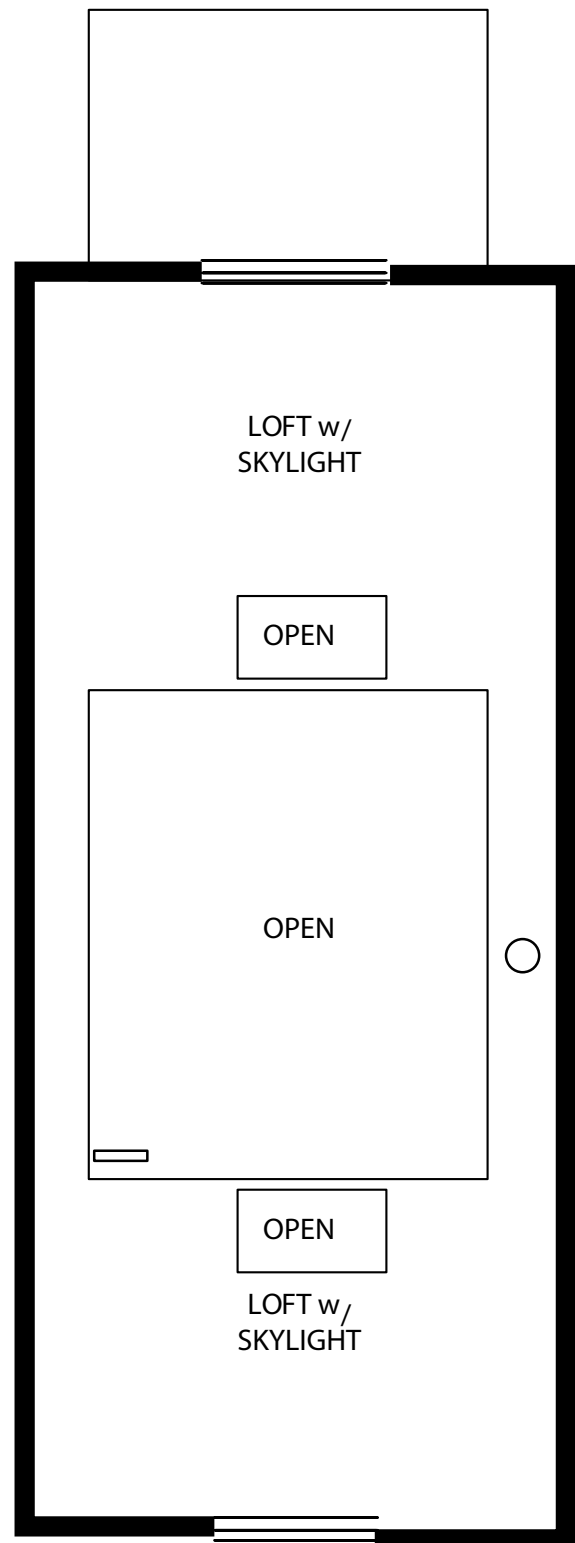
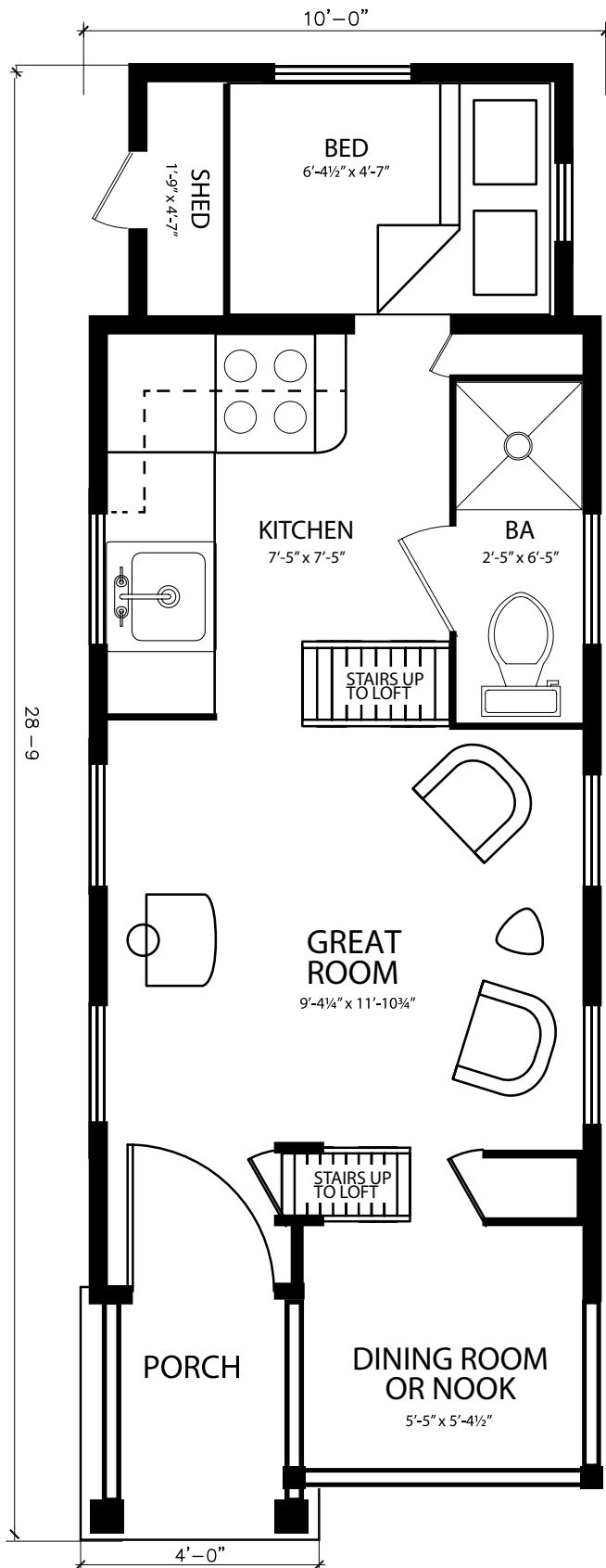
Note: All dimensions are approximate

# FLOOR PLANS

288 Square feet + Sleeping Loft

Estimated Material Costs (foundation) : \$25,600

Estimated Material Costs (on trailer) : \$30,400





# FOUR LIGHTS PLANS

## JAY SHAFER'S MOST INNOVATIVE & BEAUTIFUL HOME DESIGNS

### A NOTE FROM JAY

During the past eighteen years, I've refined my designs to create some of the best small homes available.

How are these new house designs different from my old designs?

#### THE IMPROVEMENTS ARE MANY:

- Their construction is much easier and **more affordable**.
- It's possible to build the homes on wheels or on a foundation, and move from one surface to the other.
- Each home now has 8 times as much insulation and an unbroken waterproof membrane where the wheel wells once were.
- I've opened up the cathedral ceilings by eliminating the collar beams using my "Shafer Shelf." The simplified interior allows for 6'-6" ceilings under all lofts.
- For the first time, several of the houses now accommodate a full-length bed downstairs.

#### IMPROVED DESIGN FOR TRAILERS

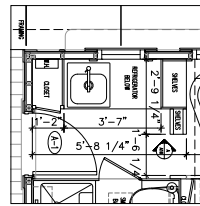
All of our front-gable houses of 120 square feet or smaller have been configured to fit *between* the wheel wells of a standard car hauler. No more cutting around the wheel wells and risking leakage or insulation problems.

#### NOT-QUITE-SO-TINY

I've also designed some slightly larger houses in the 280 square foot range (plus another 250 for prospective loft space). With these wider houses, the wheel well issue has been resolved by building above the wheels entirely and classifying the houses as wide-loads.

Jay Shafer  
Founder, Four Lights Tiny House Co.

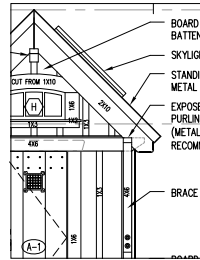
### WHAT'S INCLUDED IN THE FURNISHED PLAN SETS?



#### FLOOR PLANS

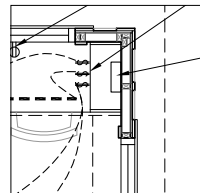
Our furnished plan sets include detailed floor plans for both the main floor and the loft.

All dimensions are clearly noted. Door, window, appliance, and suggested component layout is included.



#### EXTERIOR ELEVATIONS

All four elevation drawings with exterior details and dimensions are a standard feature in all of our plan sets.

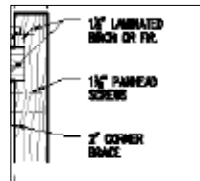


#### ELECTRIC PLANS

Main floor and loft electrical plans are included in all of our furnished plan sets.

#### ROOF PLAN

The roof plan gives a view of the roof from above, calling out slopes and pitches, and indicating rafter locations.



#### INTEGRAL ROOM COMPONENTS

Our furnished plan sets are the only plans around that include individual plans for bathroom and kitchen components. These can be built separately and slide through the front door for a highly customizable layout.

#### COMPONENT FURNISHINGS

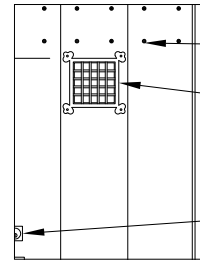
Our furnished plan sets are the only plans on the market that include individual plans for furnishings that fit perfectly in your tiny house. Including many popular multi-use pieces. See the following page for details.

#### FOUNDATION AND TRAILER PLANS

Build your house on a foundation or a trailer! Our plan sets contain both foundation and trailer building plans.

#### FRAMING PLANS

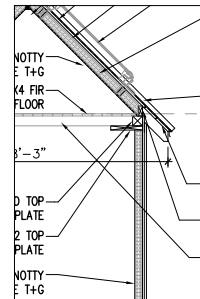
These plans show the framing for all walls, gables and lay out the exact location of each stud.



#### BOARD & BATTEN DOOR

Our unique board and batten front door plan, complete with a handsome iron speak-easy, is included

with all of our plans.



#### TRANSVERSE SECTION

An important feature in our plans, the transverse section shows a cross section of the house, making important information available

such as wall thickness, roofing material, flooring details, roof pitch, ceiling heights, and insulation.

#### MATERIALS LIST

An uncommon bonus feature for house plans, our thorough materials list will help you prepare and shop. All of our Furnished Plans include a list of everything you'll need to build your tiny house.

# COMPONENTS

Our furnished plan sets include the following component plans



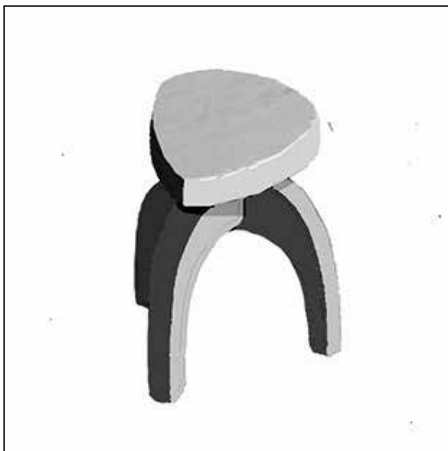
WASHROOM



KITCHENETTE



OFURO TUB



HALF-VESICA TABLE



SKINNY CHAIR



TANSU LADDER



SKINNY LADDER

