

# ENTERPRISE INTELLISYNC™, SECOND EDITION

## THE INTEGRATED SYNCHRONIZATION, DEPLOYMENT, AND MANAGEMENT SOLUTION FOR THE ENTERPRISE

Enterprise Intellisync™, Second Edition software from Pumatech provides organizations with a single resource for synchronizing PIM (personal information management) and custom database information, both locally and remotely, between desktop PCs, servers, and mobile devices – and for managing handheld software and devices from one centralized location. This powerful new solution dramatically lowers total cost of ownership (TCO) for handhelds by giving IT personnel the ability to deploy centralized synchronization solutions and to manage and track mobile devices as corporate assets, with administrative features that integrate with existing enterprise infrastructure.

Enterprise Intellisync, Second Edition includes Pumatech's award-winning Intellisync® engine for desktop, LAN-based, and remote synchronization of

e-mail, calendar, contacts, and tasks between Palm OS®/Windows CE/Pocket PC handhelds and such PC-based applications as Microsoft Exchange and Lotus Notes. Enterprise Intellisync also facilitates local and remote synchronization between custom handheld applications created with Pumatech's Satellite Forms® software (included) and back-end databases, including Oracle, Microsoft SQL Server, and many other ODBC-compliant data sources.

An integrated, centralized Administrator's Console greatly simplifies the task of deploying, managing, and upgrading Enterprise Intellisync's software components throughout your organization, while also addressing the issue of handheld management.

Enterprise Intellisync makes it easy to pre-configure settings and access privileges, deploy licenses and upgrades, back up and restore applications, troubleshoot user problems, and inventory device assets.

### KEY FEATURES

**DESKTOP AND SERVER-  
BASED PIM & E-MAIL  
SYNCHRONIZATION**

**CRADLE/WIRELESS  
SYNC BETWEEN  
HANDHELDS AND  
SERVER DATABASES**

**CENTRALIZED  
CONFIGURATION,  
LICENSE & DEVICE  
MANAGEMENT**

**PASSWORD  
PROTECTION &  
PRECONFIGURATION  
CAPABILITIES  
ENSURE SECURITY**



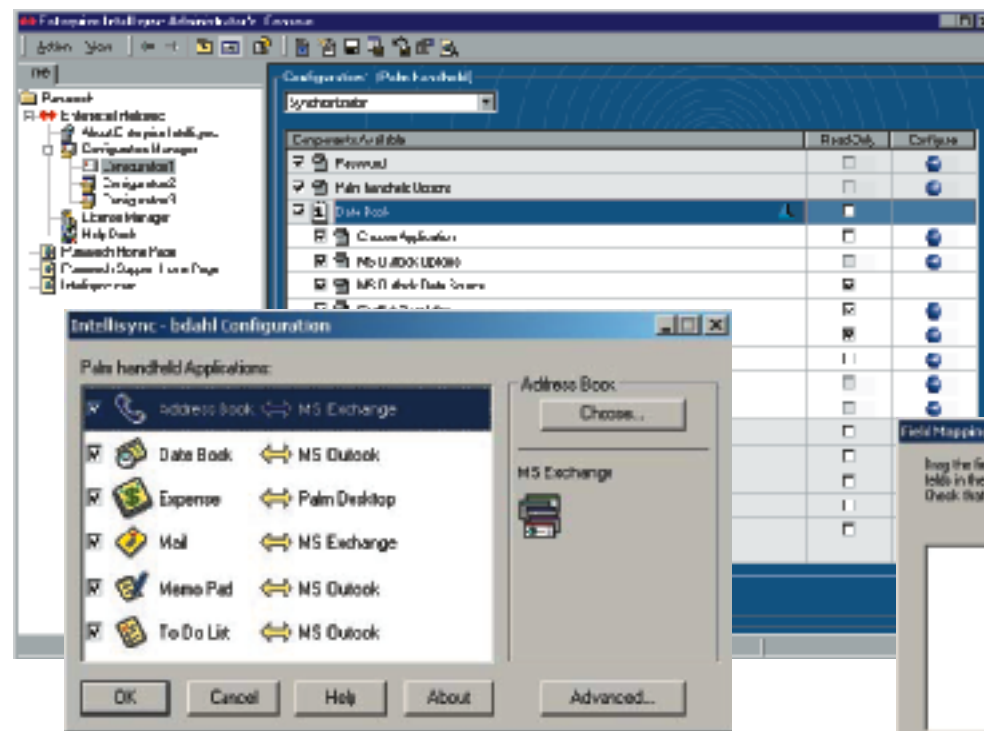


Enterprise Intellisync, Second Edition software can help your organization work toward realizing the promise of the “Real-time Enterprise” – an environment where current, highly relevant data enables your employees to make informed and timely decisions based on the latest events of the business. The result is improved decision making and faster response to market changes.

### Sync e-mail, PIM information, and e-mail attachments

- Stay up to date with desktop, LAN-based, or remote synchronization.
- Automatically synchronize your ever-changing calendar, e-mail, contacts, and tasks between your handheld and corporate groupware application.
- Quickly synchronize large databases by using filters to select only the information you need.
- Eliminate duplicate entries through automatic detection and resolution of data conflicts.
- Use advanced capabilities like intelligent field mapping and date range support for complete control over your information.
- Receive real-time\* alerts via e-mail to your desktop or your wireless phone when new appointments or e-mails are added to your PIM software.
- Use Pocket PC\*\* handhelds to forward, download, and upload e-mail attachments based on such applications as Microsoft Word, Adobe Acrobat, Microsoft Excel, and Microsoft PowerPoint.
- Access and update PIM data using a WAP phone or any regular HTML browser.\*

Manage configuration from the Administrator's Console

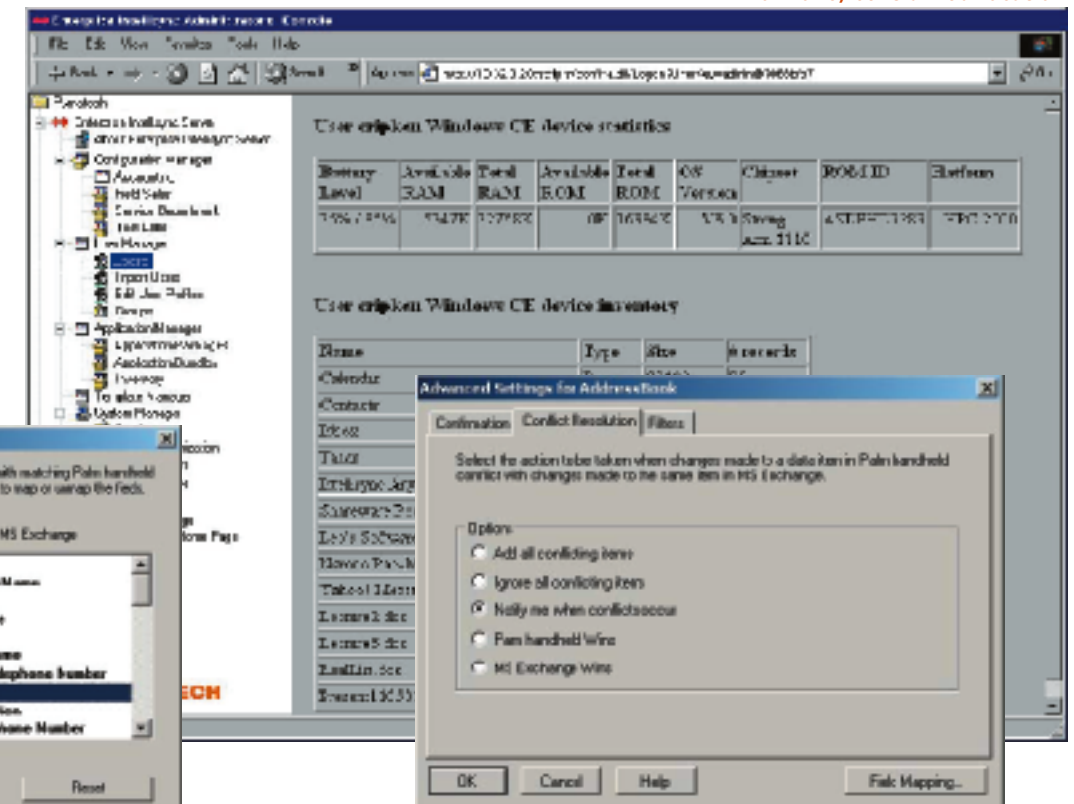


Preconfigure software for different groups or individual users

### Sync mission-critical corporate back-end data

- Use your Palm OS or Pocket PC handheld to access and interact with essential information residing in enterprise databases such as Oracle, Microsoft SQL Server, Microsoft Access, FileMaker, or any ODBC-compliant data source.
- Use Pumatech's Satellite Forms software – included with Enterprise Intellisync, Second Edition – to rapidly develop and deploy custom-tailored mobile applications that integrate with your back-end data.
  - Automatically create associations between your mobile applications and enterprise database tables, eliminating the need to manually develop custom conduits.
- Access data via wireless and direct network connections using standard TCP/IP, including cradle sync.
- Choose the sync method that works best for you: automatic fast sync, table copies, or query/response.
- Leverage Enterprise Intellisync's multi-threaded server design to support thousands of mobile users.
- Utilize both batch and real-time data transfer using Enterprise Intellisync's flexible server architecture.

Easily take inventory of handheld devices from one, centralized location



Custom field mapping

Advanced conflict resolution

### Cost-effectively & securely manage your users

Utilize Enterprise Intellisync's built-in Administrator's Console to manage applications and devices from one centralized location. Enterprise Intellisync incorporates a host of Windows-based directory, system management, diagnostic, and communications services, and can be used in conjunction with Microsoft Systems Management Server (SMS) or other systems management software to distribute configured and licensed Intellisync software applications.

- Preconfigure desktop synchronization software to ensure security and meet the needs of different groups or individual users.
  - Set password protection to prevent others from changing configuration settings and options, or to prohibit access to specific databases.
  - Limit changes allowed to software settings – by individual or group.
  - Restrict access to certain features, such as filtering and field mapping.
- Deploy Intellisync license, configuration, upgrade, and application files to desktops throughout your organization.

- Track handheld devices as capital equipment assets, linking them to particular owners.
  - Take inventory of handheld devices, including information on operating system, applications, memory, and battery life.
  - Deploy applications, pre-load devices with standard applications and utilities, update devices with new applications and data, and re-create the contents of a device via back-up and restore capability.

### Enterprise Intellisync, Second Edition supports the following applications:

#### Enterprise Intellisync – Desktop Component

- Microsoft Outlook 97/98/2000/2002
- Microsoft Schedule+ 7.5
- ACT! 4.0.2/2000
- Lotus Organizer 5.0/6.0
- Lotus Notes 4.5/4.6/5.0
- Novell GroupWise 5.5.2/5.5.4/5.5.4.1/6.0\*\*\*
- Palm™ Desktop software

#### Enterprise Intellisync – Server Component

- Microsoft Exchange 5.5/2000
- Lotus Notes 4.6/5.0



## Minimum system requirements

### Enterprise Intellisync Desktop Component

#### Administrator's Console

- Windows NT 4.0 Workstation or Server with Service Pack 5, or Windows 2000 Server
- 30MB available disk space
- 64MB RAM
- CD-ROM drive
- Internet Explorer 5
- Microsoft Internet Information Server (IIS) 2.0+ (required for optional Help Desk snap-in)

#### Intellisync Desktop

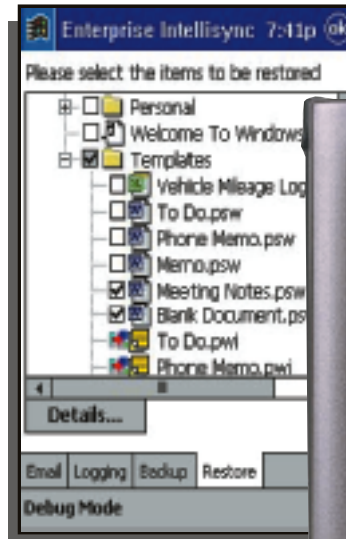
- Windows 95/98/2000 Professional Edition, Windows NT 4.0 with Service Pack 5, Windows Me, or Windows XP
- 486 PC; 133Mhz Pentium-compatible PC for Windows 2000; 150Mhz for Windows Me; 233Mhz for Windows XP
- 30MB available disk space
- 16MB RAM; 64MB RAM for Windows 2000/XP; 32MB RAM for Windows Me
- CD-ROM drive
- 1 available serial or USB port for cradle-based synchronization
- For Palm OS devices: HotSync Manager 3.0; for Pocket PC 2002 devices: ActiveSync 3.5; for Pocket PC/Windows CE devices: ActiveSync 3.1

### Enterprise Intellisync Server Component

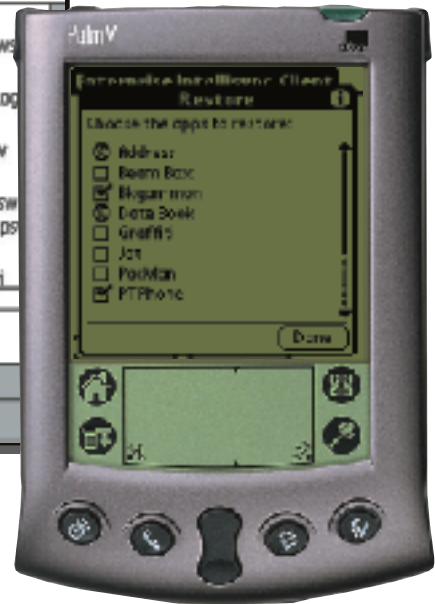
- Windows NT 4.0 Workstation or Server with Service Pack 5, or Windows 2000 Server with Service Pack 1
- Pentium III 600Mhz
- 1GB available disk space
- 128MB RAM
- CD-ROM drive
- Microsoft Internet Explorer 5 (required by MMC)
- IIS 2.0+ on server machine (required for WAP access and alerts)
- RAS or similar PPP dial-in system (on that server or a separate server)
- System administration privileges for creating accounts and installing, activating, and deactivating services
- Microsoft Exchange 5.5/2000 pointing to Exchange server

#### Desktop Client Requirements

- Windows 95/98/2000/NT 4.0 Workstation with Service Pack 5/2000 Professional/Me
- TCP/IP installed and operational on all systems
- Microsoft Outlook 97/98/2000 Professional Edition/2002
- System administration privileges for installing desktop client on that machine
- For Palm OS devices: HotSync Manager 3.0+; for Pocket PC/Windows CE devices: ActiveSync 3.5



Use back-up and restore capability to safeguard device content



## Supported Devices

- Palm OS handhelds and smartphones (running Palm OS 3.0/3.1/3.5/4.0)
- Pocket PC/Windows CE devices (including Pocket PC 2002) such as Compaq iPAQ, HP Jornada, and Casio Cassiopeia running Windows CE 3.0+
- WAP phones (Enterprise Intellisync Server component only)
  - Openwave 4.0 or greater browser
  - Support for 3.x browsers will vary by carrier
  - i-mode and J-Phone phones (for Japanese version; not available in English version)

\*This feature is available only through the Enterprise Intellisync Server component.

\*\*Forwarding, downloading, and uploading of e-mail attachments is available only through the Enterprise Intellisync Server component.

\*\*\*GroupWise 5.5.4 and 5.5.4.1 require an additional update which can be downloaded from <http://support.novell.com/filefinder>. GroupWise 5.5.4 requires gw55puma.exe. Version 5.5.4.1 requires gweppuma.exe. GroupWise 6.0 email Cabinet folder mapping is not supported.

To order, or for more information, call **1-800-224-5430**, or visit **[www.pumatech.com](http://www.pumatech.com)**

In Europe, e-mail us at **[europesales@pumatech.com](mailto:europesales@pumatech.com)**, or call our International Freephone at **00 800 7862 8324** (990800 7862 8324 in Finland, 900 982922 in Spain, or 800 791311 in Italy).

Copyright © 2002 Pumatech, Inc. All rights reserved.

Pumatech, the Pumatech logo, Intellisync, Enterprise Intellisync, the Enterprise Intellisync logo, and Satellite Forms are trademarks of Pumatech Inc., that may be registered in some jurisdictions. Palm and Palm OS are trademarks of Palm, Inc. All other company and product names are trademarks of their respective owners. The software is protected by U.S. Patent Nos. 5,392,390, 5,666,553, 5,684,990, 5,701,423, 5,943,676, 6,044,381, 6,141,664, 6,212,529, and 6,330,568. Other patents pending.



Pumatech, Inc. / 2550 North First St., Ste. 500 / San Jose CA 95131 / **[www.pumatech.com](http://www.pumatech.com)**