

MOBILEXTENSION™ for Lotus Notes

EXTEND LOTUS NOTES TO THE FIELD

MobileXtension® for Lotus Notes software – a plug-in for Pumatech's Enterprise Intellisync® Server and Satellite Forms® MobileApp Designer software – gives you the power to quickly extend your existing Lotus Notes and Domino data to Palm OS®- and Pocket PC 2002-compatible devices.

In Satellite Forms, MobileXtension for Lotus Notes allows developers to import forms from Lotus Notes documents. In Enterprise Intellisync Server, this plug-in enables developers to sync their Satellite Forms applications directly to a Notes database.

MobileXtension is an ideal complement to Satellite Forms MobileApp Designer software, the premier, visual rapid application development environment for Palm OS and Pocket PC 2002 handhelds. Satellite Forms provides quick development of sophisticated handheld applications that integrate seamlessly with desktop database applications or directly with server-based data via Pumatech's Enterprise Intellisync Server software (sold separately).

Boost productivity and revenue by giving workers the information they need when they need it, and free them up to do their jobs. With MobileXtension and Satellite Forms, it has never been easier to extend Notes data to the field.

KEY FEATURES

*IMPORT CUSTOM
NOTES FORMS INTO
SATELLITE FORMS
SOFTWARE; MAP
APPROPRIATE FIELDS*

*SYNC SATELLITE FORMS
APPS DIRECTLY TO
NOTES/DOMINO
(REQUIRES ENTERPRISE
INTELLISYNC
SOFTWARE)*

*SYNC TO LOTUS
NOTES/ DOMINO
4.6/5.0*

Allow users to access essential information

- Create powerful solutions that provide users with access to Notes data – anytime, anywhere.

Deliver speed and accuracy

- Enable users to achieve faster and more accurate data collection, using electronic forms with drop lists and required fields.
- Improve process throughput and turnaround times.

Develop intuitive solutions that boost productivity

- Create “pen-friendly” forms with easy-to-use interfaces that do not require computer experience from the end user .
- Synchronize data with a Lotus Notes database at the press of a button.

Save time and money

- Eliminate the need to re-key and validate data collected in the field.
- Reduce the use of expensive paper forms, duplication, re-entry, verification, and overnight shipping.
- Easily integrate with existing Notes systems.

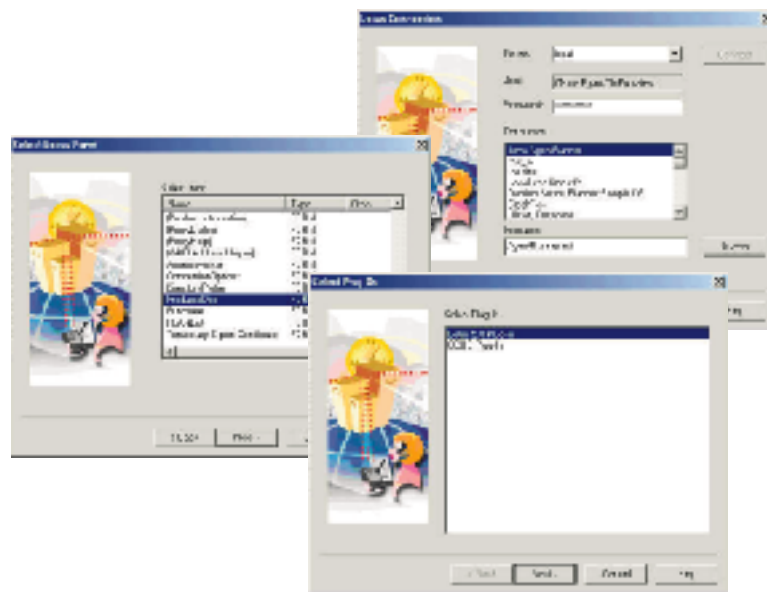
Design customized solutions

Develop solutions with a customized look and feel, using:

- Text and numeric edit fields
- Buttons, graphics, ink fields, and timestamps
- Drop lists, radio buttons, check boxes, sliders, and more

Create a wide range of applications

- Sales automation
- Field service
- Health care delivery
- Insurance
- Inventory control
- Inspections
- Distribution
- Market research
- Pharmaceutical detailing
- And more



Supported applications

- Lotus Notes 4.6/5.0

Supported devices

- Palm OS handhelds and smartphones (running Palm OS 3.0/3.1/3.5/4.0)
- Pocket PC 2002

System requirements:

The system on which you are installing the MobileXtension for Lotus Notes plug-in must meet the following requirements:

- Satellite Forms 5.1 or later
- Enterprise Intellisync Server 2.02 or later

Enterprise Intellisync Server & Satellite Forms

System Requirements:

Server component

- Windows NT 4.0 Workstations or Server with SP6, or Windows 2000/Windows XP Server with SP1
- Pentium III 600 MHz
- 1 GB available disk space
- 128 MB RAM
- CD-ROM drive
- Microsoft Internet Explorer 5 (required by MMC)
- IIS 2.0+ on server machine (required for WAP access and alerts)
- RAS or similar PPP dial-in system (on that server or a separate server)
- System administration privileges for creating accounts and installing, activating, and deactivating services
- Lotus Notes 4.6/5.0 client pointing to a Domino Server
- Lotus Notes C++ API (lcppn21.dll for Notes 5.0 or lcppn20.dll for Notes 4.6)

Server component – desktop client

- Windows 95/98/2000/2000 Professional/Me/XP/NT 4.0 Workstation with SP6
- TCP/IP installed and operational on all systems
- Lotus Notes 4.6/5.0 Client
- System administration privileges for installing desktop client on that machine
- For Palm OS devices: HotSync Manager 3.0+; for Pocket PC/Windows CE devices: ActiveSync 3.5

Note: lcppn21.dll requires that certain libraries be located in the Lotus Notes Client 5.0 Directory or the Lotus Domino Server 5.0 directory to function properly. Refer to your Lotus Notes documentation for complete details.

To purchase, or for more information, please visit www.pumatech.com

In Europe, email us at europesales@pumatech.com, or call our International Freephone at **00 800 7862 8324** (990800 7862 8324 in Finland, 900 982922 in Spain, or 800 791311 in Italy).